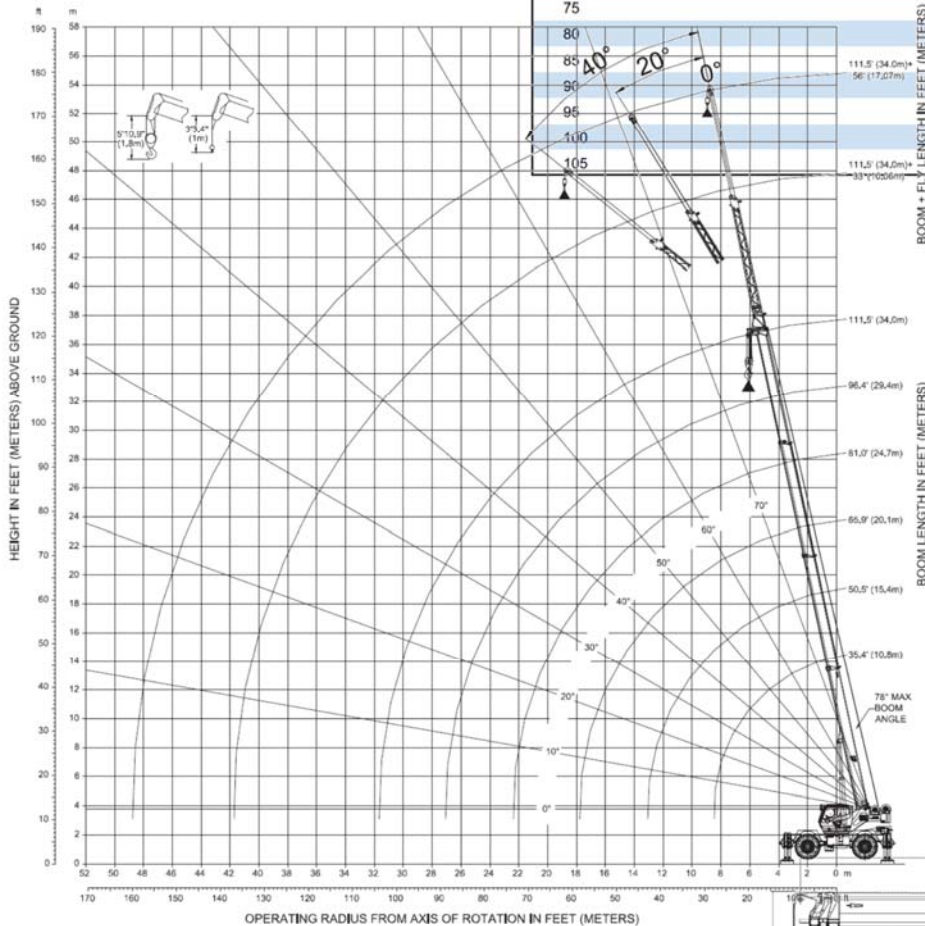




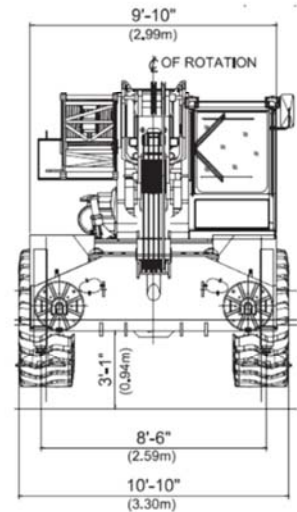
FULLY EXTENDED OUTRIGGERS - MAIN BOOM CAPACITY							
1000 lbs. cwt.		22.6 ft. x 22.6 ft.		ANSI B30.5		85%	
BOOM LENGTH IN FEET - CAPACITY LISTED IN POUNDS							
RADIUS	30	50.5	66	81	96	112	RADIUS
FT.							FT.
10	121000	60200					10
12	110110	60200					12
15	93830	60200	58190				15
20	71060	59400	51370	40810			20
25	52840	49720	43450	36520	31350		25
30	38380	38250	37290	31570	27610	23280	30
35		28750	29530	27610	24200	21120	35
40		22590	23260	23830	21450	18700	40
45		19110	18860	19370	19250	16720	45
50			15610	16070	16240	15070	50
55			13140	13530	13690	13640	55
60			11560	11520	11660	12060	60
65				9890	10020	10390	65
70				8570	8670	9010	70
75				7640	7540	7850	75
					6580	6860	80
					5780	6000	85
					5220	5260	90
						4620	95
						4060	100
						3600	105



BOOM + FL² LENGTH IN FEET (METERS)

BOOM LENGTH IN FEET (METERS)

78° MAX BOOM ANGLE



Crane with cwt.	CRANE OPERATING WEIGHTS					
	Gross Vehicle Weight		Front Axle Load		Rear Axle Load	
	lb	kg	lb	kg	lb	kg
	86,240	39,200	45,062	20,440	41,358	18,760

